



TTI Inspection Services Co., Ltd.

Add: Room B2-401, Dongchuang Tech Park, No.216 Jinfeng Rd., Mudu town, Suzhou, China, 215101
 Tel : +86 512 65023786
 E-mail: info@tti-inspection.com
 Web: www.tti-inspection.com

INSPECTION REPORT

REPORT NO.	CLIENT P/O NO.	DATE OF REPORT	TOTAL PAGES
TTI20160517-****	PO546	17 th May. 2016	6

CLIENT	*****	VENDOR	*****
INSPECTOR	Bill	PLACE OF INSPECTION	*****
DATE OF VISIT	17 th May. 2016	TYPE OF INSPECTION	1- 10% Visual, Marking and 1% Dimension check. 2- Certificates review
VALVE TYPE	Pipe fittings		
ORDER QTY	8189pcs		

INSPECTION AND FINDINGS

1. Checking Results:

Check list as follow:

ITEM	Qty	Description	Dimension check qty	Visual check Qty	Result and Findings
1	600	ELBOW 45° L/R 1/2" SCH 40	6	60	OK
1	300	ELBOW 45° L/R 3/4" SCH 40	3	30	OK
1	200	ELBOW 45° L/R 1" SCH 40	2	20	OK
1	1500	ELBOW 45° L/R 1-1/4" SCH 40	15	150	OK
1	20	ELBOW 45° L/R 10" SCH 40	1	2	OK
1	20	ELBOW 45° L/R 12" SCH 40	1	2	OK
1	5	ELBOW 45° L/R 24" SCH 40	1	1	1pcs the BW bevel isn't smooth
1	4	ELBOW 45° L/R 36" SCH STD	1	1	BW end plane requires 1.6±0.8mm, but actual parts is sharp, have no plane end
2	2000	ELBOW 90° L/R 1/2" SCH 40	20	200	OK
2	2000	ELBOW 90° L/R 1-1/4" SCH 40	20	200	OK
2	200	ELBOW 90° L/R 5" SCH 40	2	20	OK
2	10	ELBOW 90° L/R 16" SCH STD	1	1	OK
2	6	ELBOW 90° L/R 18" SCH STD	1	1	the marking hadn't finished, because customer didn't give the additional marking of this size to factory, please EG supply
2	10	ELBOW 90° L/R 18" SCH 40	1	1	BW end plane requires 1.6±0.8mm, but actual dimension is 3.3mm



TTI Inspection Services Co., Ltd.

Add: Room B2-401, Dongchuang Tech Park, No.216 Jinfeng Rd., Mudu town, Suzhou, China, 215101
 Tel : +86 512 65023786
 E-mail: info@tti-inspection.com
 Web: www.tti-inspection.com

2	4	ELBOW 90° L/R 28" SCH STD	1	1	OK
2	4	ELBOW 90° L/R 32" SCH STD	1	1	OK

2. Visual and Marking check

2.1 Pictures:



ELBOW 45° L/R 1/2" SCH 40



ELBOW 45° L/R 3/4" SCH 40



ELBOW 45° L/R 1" SCH 40



ELBOW 45° L/R 1-1/4" SCH 40



ELBOW 45° L/R 10" SCH 40



ELBOW 45° L/R 12" SCH 40



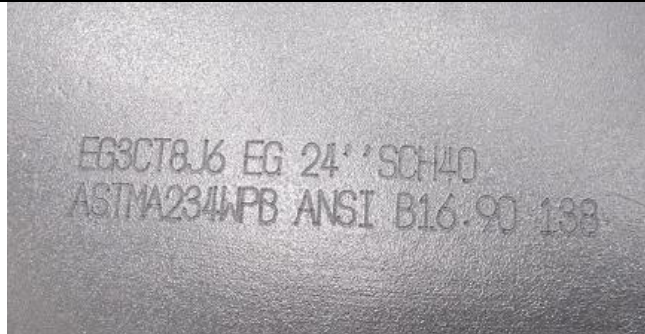
TTI Inspection Services Co., Ltd.

Add: Room B2-401, Dongchuang Tech Park, No.216 Jinfeng Rd., Mudu town, Suzhou, China, 215101

Tel : +86 512 65023786

E-mail: info@tti-inspection.com

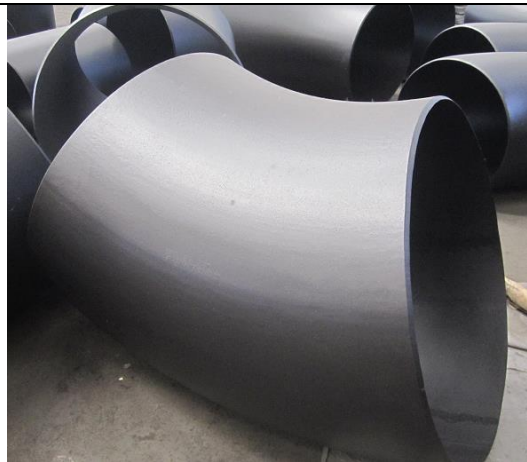
Web: www.tti-inspection.com



marking



ELBOW 45° L/R 36" SCH STD welding line



ELBOW 45° L/R 36" SCH STD



ELBOW 90° L/R 1/2" SCH 40



ELBOW 90° L/R 1-1/4" SCH 40



ELBOW 90° L/R 5" SCH 40

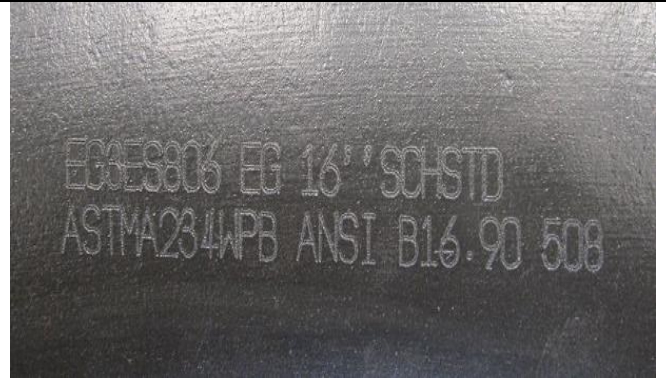


TTI Inspection Services Co., Ltd.

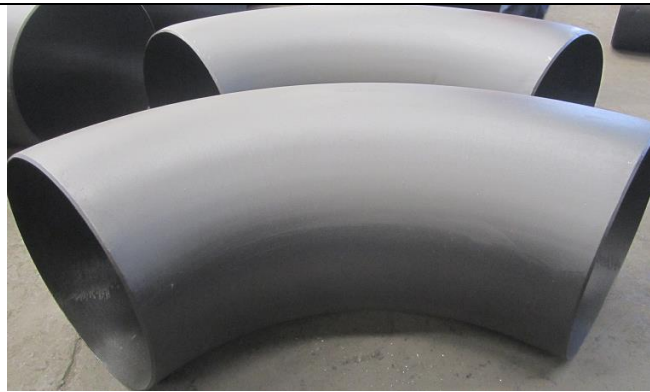
Add: Room B2-401, Dongchuang Tech Park, No.216 Jinfeng Rd., Mudu town, Suzhou, China, 215101
Tel : +86 512 65023786
E-mail: info@tti-inspection.com
Web: www.tti-inspection.com



ELBOW 90° L/R 16" SCH STD



marking

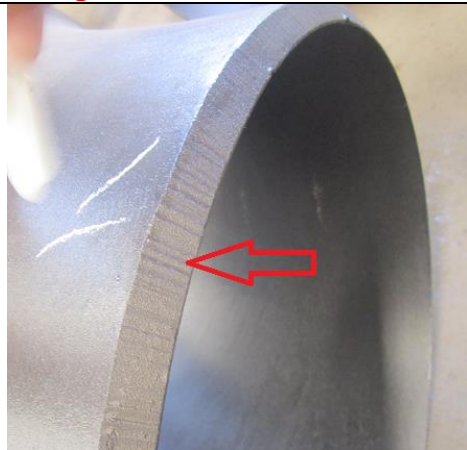


ELBOW 90° L/R 28" SCH STD

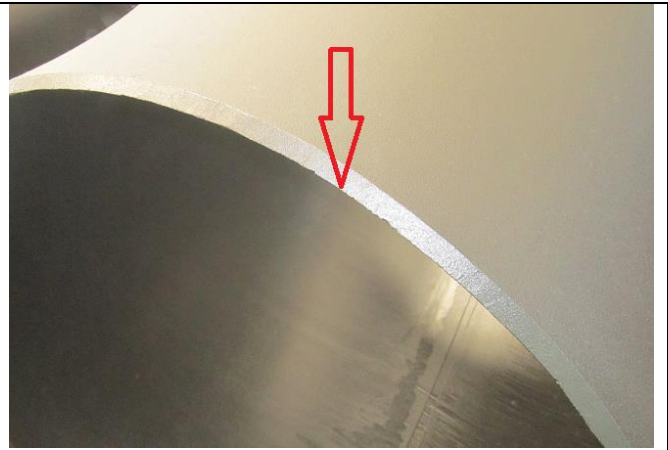


ELBOW 90° L/R 32" SCH STD

2.2 Findings :



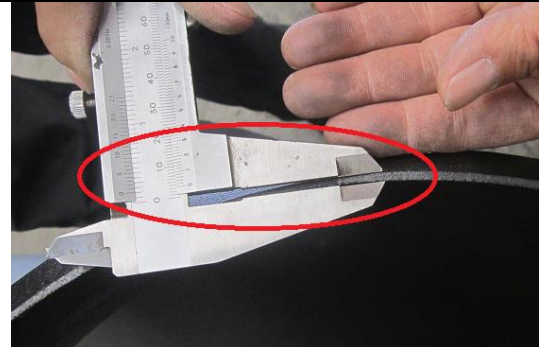
45° elbow 24" Sch40, 1pcs the BW bevel isn't smooth



45° elbow 36" STD, BW end plane requires 1.6 ± 0.8 mm, but actual parts is sharp, have no plane end



TTI Inspection Services Co., Ltd.
Add: Room B2-401, Dongchuang Tech Park, No.216 Jinfeng Rd., Mudu town, Suzhou, China, 215101
Tel : +86 512 65023786
E-mail: info@tti-inspection.com
Web: www.tti-inspection.com



90° elbow 18" STD, the marking hadn't finished, because factory didn't receive the additional marking for this size

90° elbow 18" sch40, BW end plane requires 1.6 ± 0.8 mm, but actual dimension is 3.3mm

3. Dimensions Check Pictures:





TTI Inspection Services Co., Ltd.

Add: Room B2-401, Dongchuang Tech Park, No.216 Jinfeng Rd., Mudu town, Suzhou, China, 215101

Tel : +86 512 65023786

E-mail: info@tti-inspection.com

Web: www.tti-inspection.com



END OF THE REPORT

WRITTEN BY: Bill

CHECKED AND APPROVED BY Ruiyong